



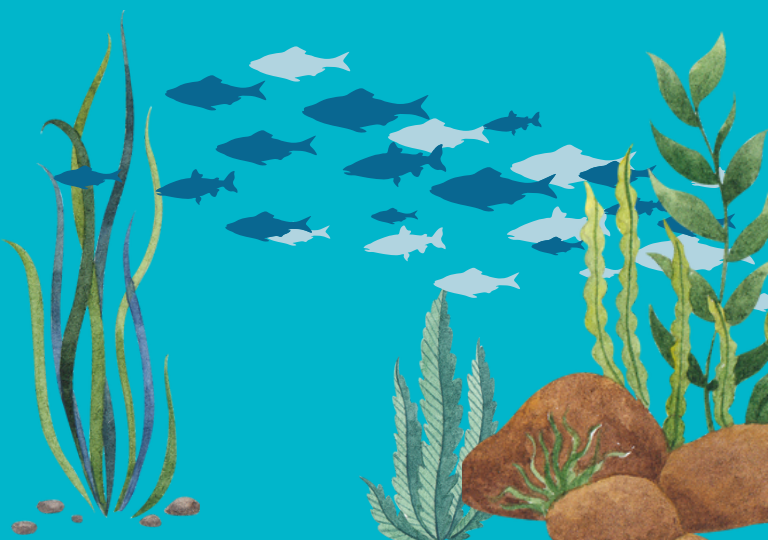
RIPPLE
REDUCE INVASIVE
PET & PLANT ESCAPES



DON'T LET IT LOOSE

Be a responsible pet owner

Unwanted pets and plants from aquariums and water gardens can become invasive.
Never release them into the wild.






PROTECT OUR WATERS

REHOME YOUR PET - NEVER RELEASE IT.

There are many options!

- ✓ Contact a RIPPLE Fresh Water Protector retailer for advice.
- ✓ Give or trade with another hobbyist.
- ✓ Donate to a school or nature center.
- ✓ Find a rescue organization.

TIPS

-  Choose the right pet. Consider its size, lifespan, and compatibility.
-  Pour water from an aquarium or water garden on lawns or house plants. Never dump it down storm drains.
-  Plants can be invasive too! Toss them in the trash or give them away.

Find a Fresh Water Protector retailer:
canr.msu.edu/ripple



This project was funded by the Michigan Invasive Species Grant Program (Michigan.gov/Invasives).